

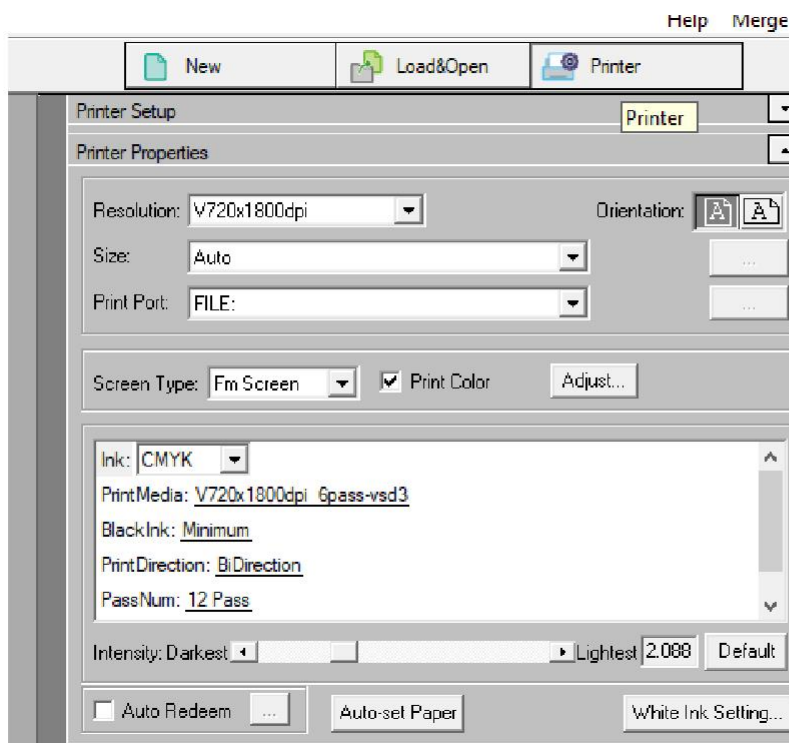
Install Profile - Square Ink Bottles

Install profile profile Maintop RIP

- Download the ICC profile on your printer PC via www.dimix.com/dtf-downloads
- Create a folder on your desktop, name it 'ICC profile Maintop' and put this ICC file in it.

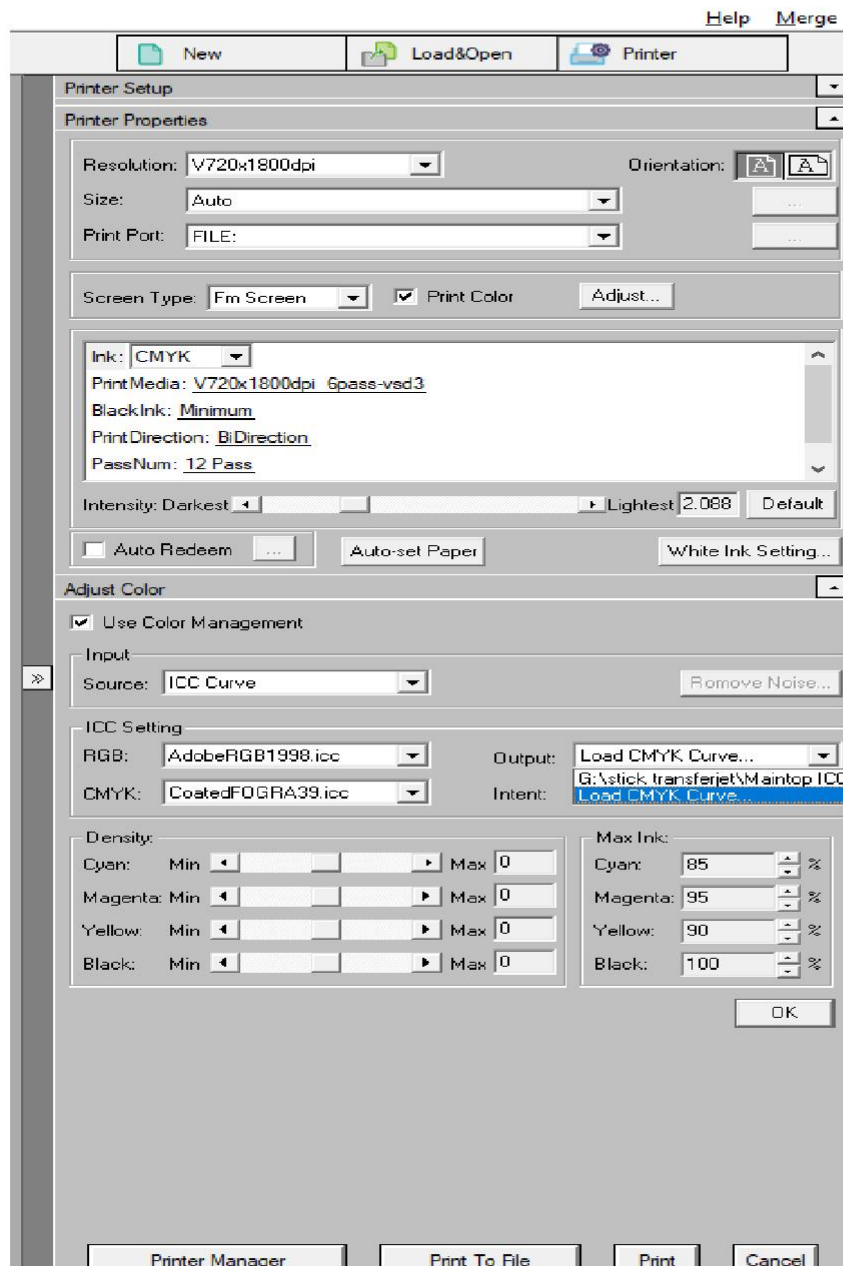
Step 1

Open "printer" tab



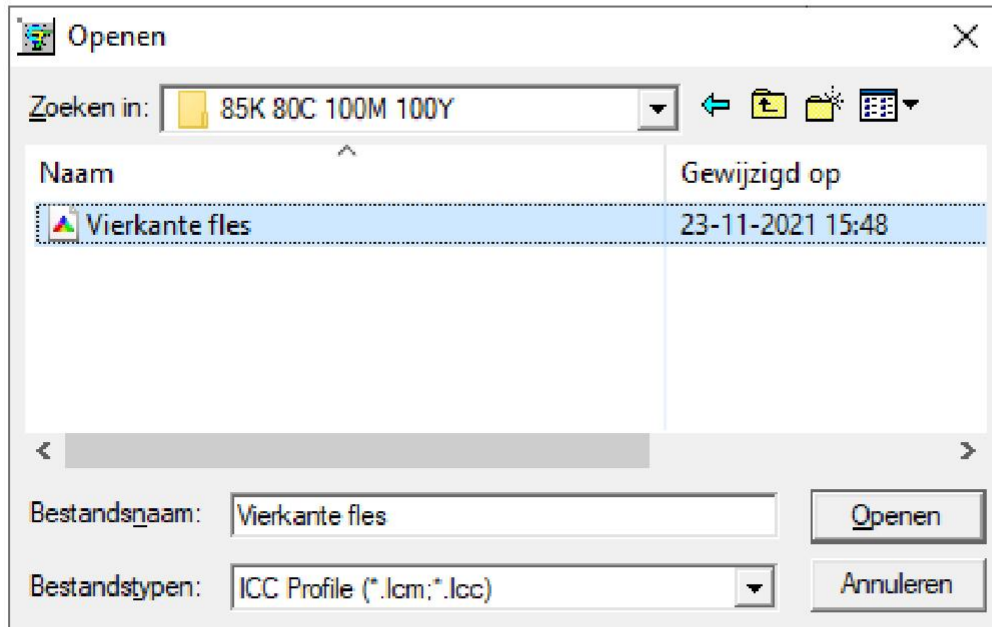
Step 2

Open "adjust color" tab and click "load CMYK curve"

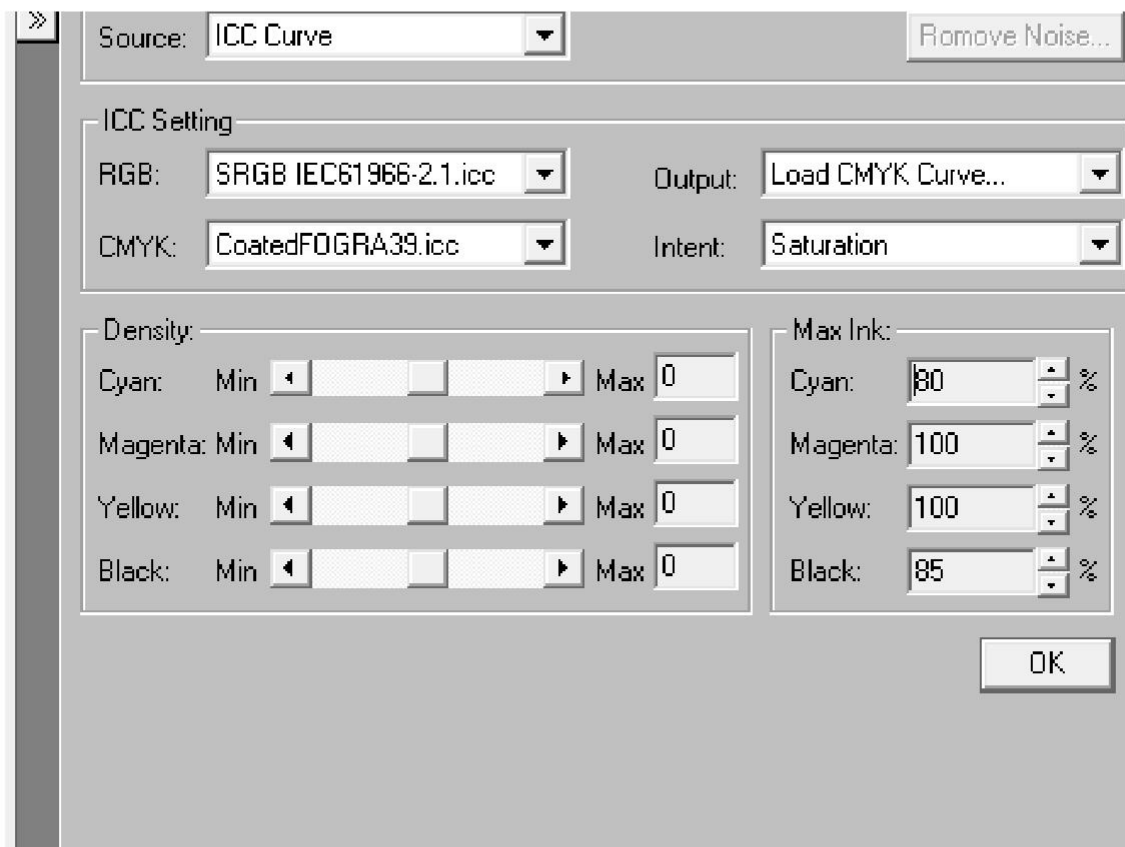


Step 3

Browse to the folder that says "square bottle.icc" (downloaded from dimix.com) and click on load.



Set Ink Limits Cyan 80, Magenta 100, Yellow 100, Black 85



Step 4

Setting Powderfix temperature:

For round ink bottles, the temperature setting on the powderfix is 115 plate and 125 top heater

For empty ink bottles, the temperature setting on the powderfix is 105 plate and 105 top heater

Press "set" then use the up/down button to set 105 degrees (green display), do this for both the plate and top heater.

